

Table of Contents

Elmira Location



Serves Chemung and Schuyler Counties

Address: 215 East Church Street, Suite 301 Elmira, NY 14901

Phone: 607-734-1647

Fax: 607-734-1018

Office Hours: Monday - Friday, 8:30 am- 4:30 pm

Services:

Bankruptcy

Family Law Issues for DV victims

Foreclosure

Landlord/Tenant

Public Benefits

SSI/SSDI

Uncontested Divorce

Unemployment Insurance Benefits

Wills & Other Advance Directives

Our Services Change - Call Our Office - 607-734-1647

The only way to be sure about whether we can help you is to call our office. Because our funding is limited, we are always seeking new grants to fund our services to low-income people. Sometimes, we get new grants that allow us to offer new services. Sometimes, grants end that once paid for us to do special kinds of legal work.

Directions to Parking Lot:

FROM US HWY 17:

1. Take Exit 56 (Jerusalem Hill Exit)
2. Head west on Church St
3. Turn right onto Clemens Center Parkway
4. Turn right onto 2nd Street
5. Turn right onto State Street to arrive

FROM 352/WEST ELMIRA:

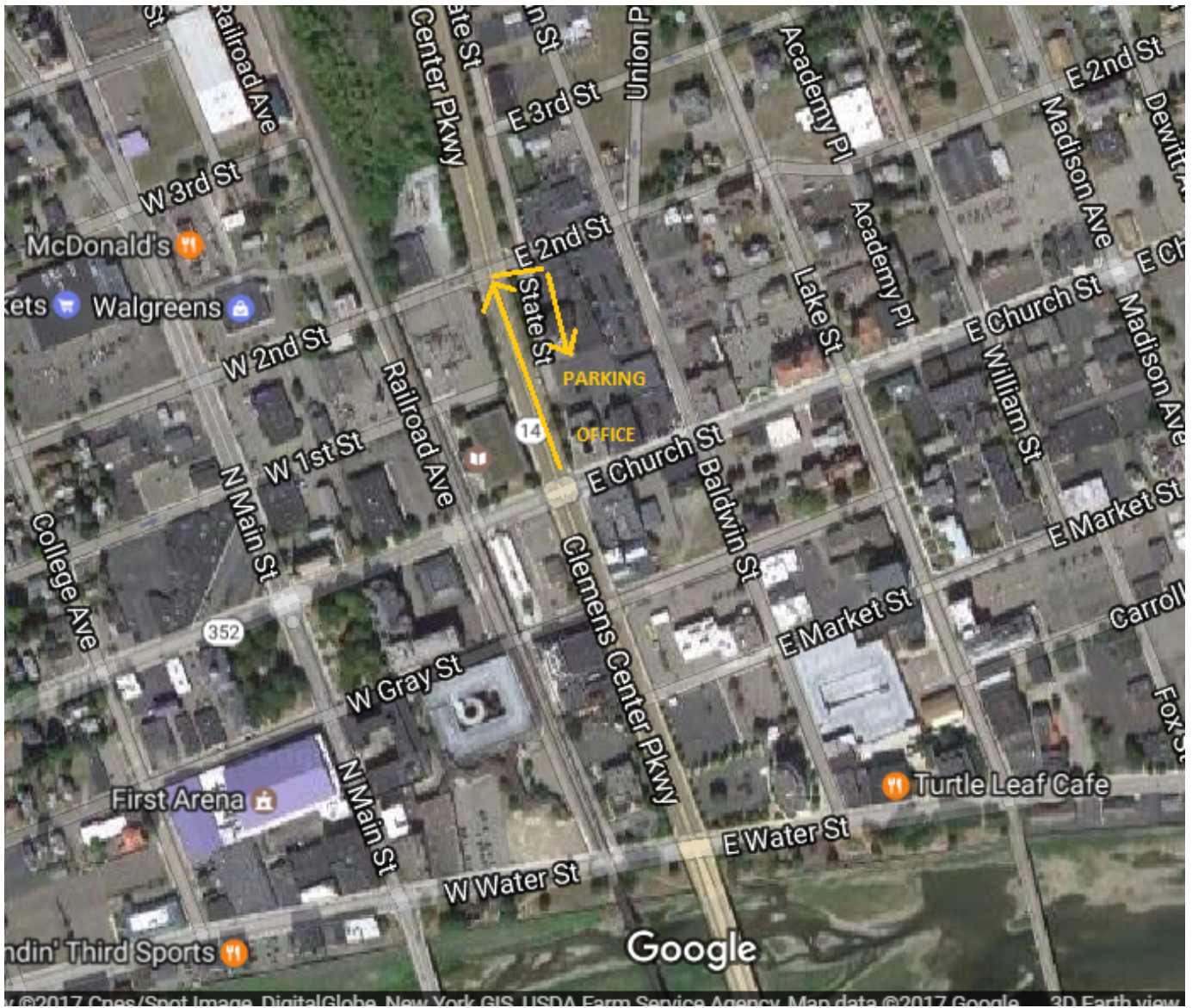
1. Head east on Church St
2. Turn left onto Clemens Center Parkway
3. Turn right onto 2nd Street
4. Turn right onto State Street to arrive

FROM THE NORTH:

1. Head south on College Avenue
2. Turn left onto 2nd Street
3. Cross Clemens Center Parkway and turn right onto State Street to arrive

FROM THE SOUTH:

1. Head north on Clemens Center Parkway
2. Turn right onto 2nd Street
3. Turn right onto State Street to arrive



Last updated on December 06, 2023.

[Print](#)

[Print](#)

[Table of Contents](#)

[NEWS](#)

News & publications

[More News](#)

August 19, 2025

General Information for Filing an Article 7-D Petition

Para ver este artículo en español por favor visite aquí. (To view this article...

[Read More about General Information for Filing an Article 7-D Petition](#)

February 14, 2025

Total and Permanent Disability Discharge for Federal Student Loans

LawNY®'s consumer unit discusses Total and Permanent Disability (TPD)...

[Read More about Total and Permanent Disability Discharge for Federal Student Loans](#)

PDF downloaded from <https://www.lawny.org/node/46/elmira-location>